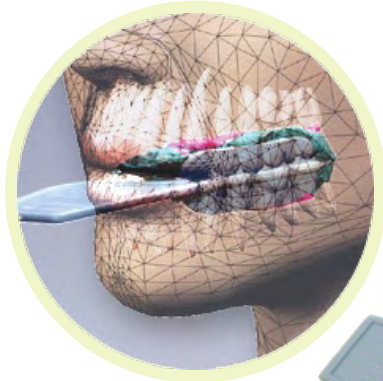


Artimax™

America's #1 selling Dental articulation tray system

Anterior Half Arch



*Follow the proven success for
much reduced chairtime/remakes
with no extra cost*

Benefits

- The ideal solution for your double bite anterior half arch impressions
- Polymer base... Zero expansion premium model base:
Far less interproximal contact problems & High Occlusion problems
- Smaller diameter silver pins ideal for anterior teeth
- Natural protrusive hinge motion with ideally rigid lateral movement
- Zirconia pin for Refractory die fabrication

U.S. Patent Nos.: 7,147,465, 6,948,932 and Patents Pending

100's of Die Stones.

**One complete tray system
for One you...**

eliminating uncontrollable,
unwanted base stone expansion



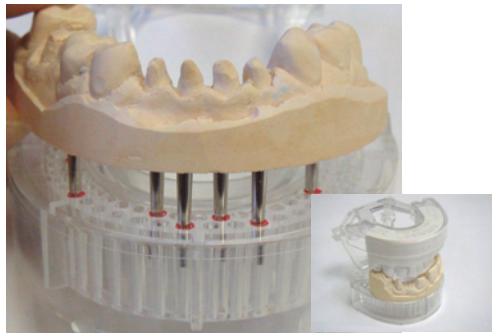
www.ArtimaxUSA.com

Ideal solution for double bite anterior half arch impression

Accuracy for even the small lower anterior teeth



- **Small size silver pin**
Combination of small pin, 25% smaller in diameter than regular pins, and 2 rows of staggered pin holes, you have virtually no problem in choosing the right pin hole.
- **No rotation of the working dies even with one pin**
Tapered stability rail on the tray bed increases retention and ensures there is no rotation
- **Vertical stability of the dies**
Pin holes do not chip like the stone base does. Due to the strong polymer base, pin holes remain intact from the ware and tare throughout the process, offering the ideal foundation.
- **Easy & accurate pin hole selection**
The patent pending alignment pin / pin hole locator allows precise pin hole selection



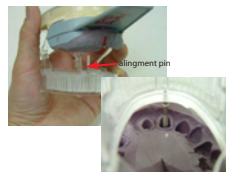
Efficiency

- **Light weight - less stress on the ceramists' hands & reduced shipping costs**
- **Standard length metal pin offers easy handling of the working die**
- **Opposing model removes easily for cleaning/ trimming**
- **No separate hinge to glue**

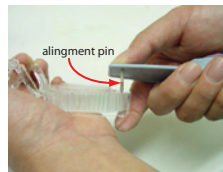
Technique Guide



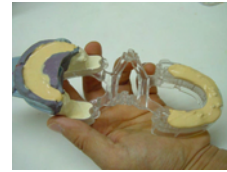
Pour the opposing side first. This will help stabilize the impression position on the tray.



Insert the alignment pin into a pin hole and double check position with the extended pin head corresponding with the prepped tooth



Puncture the pin hole membrane and place the dowel pin



Pour the die stone onto the working tray and invert over the impression. Let the stone set.



Finished model in 5 minutes.

123456 Anterior, Full arch manual (9 page - detailed, step-by-step)



Download color manual on our web site

Ordering Information

- | | |
|--|---|
| <p>123456 Quadrant Trial Kit (Small)
10 Wall version Quad trays, 10 Wall-less Quad trays</p> <p>123456 Quadrant Trial Kit (Medium)
20 Wall version Quad trays, 20 Wall-less Quad trays</p> <p>123456 Quadrant Trial Kit (Large)
50 Wall version Quad trays, 50 Wall-less Quad trays</p> | <p>123456 Quadrant Wall version (Clear 123456 C/ Blue 123456B)
50 Wall version Quad trays, 200 medium size brass dowel pins, 10 posterior stop rods</p> <p>123456 Quadrant Wall-less version 1 (Clear 123456 C/ Blue 123456 B)
50 Wall-less version Quad trays, 200 medium size brass dowel pins, 10 posterior stop rods</p> <p>123456 Quadrant Wall-less version 2 (Clear 123456 C/ Blue 123456B)
50 Wall-less version Quad trays, 200 medium size brass dowel pins, 10 posterior stop rods</p> |
|--|---|



Our Guarantee - If you are not 100 % satisfied, simply return the product for a complete refund. It's that easy.